



**Available
63,000 SF
326 DANIEL ZENKER DRIVE
BIG FLATS, NY**



OFFICE SUB-LEASE

Contact:

Michael J. Manzari, CCIM, SIOR

Pyramid Brokerage Company

607-937-9720 ext 301

mmanzari@pyramidbrokerage.com

Total SF:

63,000 SF

Other Features:

Two floors, open floor plan with perimeter offices and conference rooms.
First floor cafeteria.
Furniture and fixtures available

Year Built:

2000

Municipality:

Town of Big Flats

County:

Chemung

Zoning:

Airport Business District (Industrial)

Additional Site Information:

Located in NYS Empire Zone
Lease expires 3/16/2016

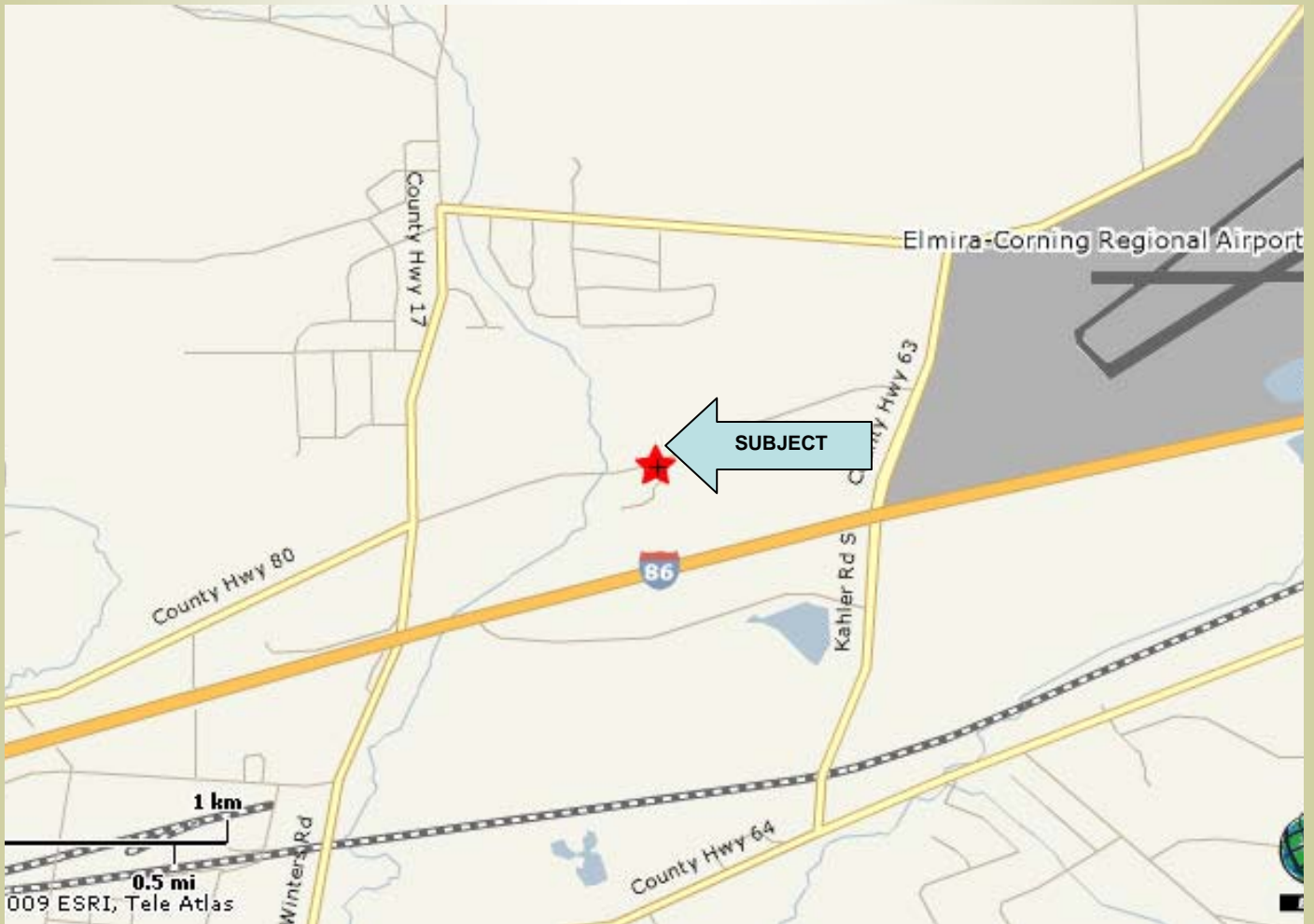
STEG | SOUTHERN TIER
ECONOMIC GROWTH

PROSPECTS | PROGRESS | PARTNERSHIPS

For Further Information Contact:

STEG 400 East Church Street, Elmira NY 14901

www.steg.com P 607-733-6513 F 607-734-2698



DISTANCE (in miles) FROM SITE TO:

I-86	3/4 mile
Elmira, New York	9.9 miles
Corning, New York	10.9 miles
Binghamton, New York	64.6 miles
New York City, New York	226 miles
Toronto, Ontario	234 miles



STEG | SOUTHERN TIER
ECONOMIC GROWTH

PROSPECTS | PROGRESS | PARTNERSHIPS