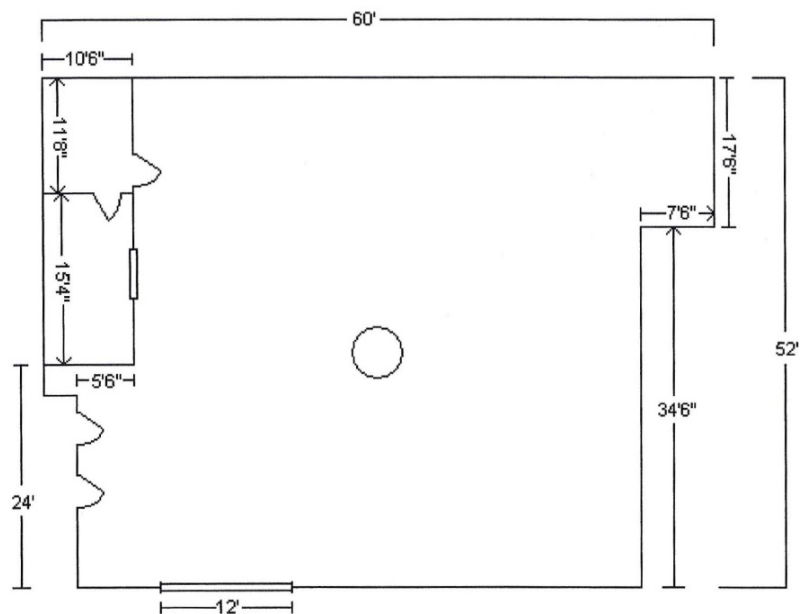


2,992 SF DRIVE-IN INDUSTRIAL SPACE

Southern Tier Commerce Center
1051 South Main Street, Elmira, NY



- 2,992 square feet
- 1 - 12" high overhead door
- 18' Clear Ceiling Heights
- New paved truck court
- Newly painted building
- 189 Square Foot Office
- Masonry construction
- Strategically located in the heart of the Marcellus Shale Gas Field
- Located on 48 Acres Site of Southern Tier Commerce Center
- Convenient to interstate and state highways
- Desirable location serving PA and NY
- Outside storage opportunities
- Southern Tier Commerce Center includes approximately 360,000 rentable square feet of buildings on 48 acres of land. The property benefits from industrial zoning, a sophisticated local economic development organization, a cooperative community and a ready labor supply.



Call John Morris @ 570-829-5700 (O) or 570-362-1700 (Cell)