

INNOVATION CORRIDOR

PRIME SITES - AIRPORT CORPORATE PARK SOUTH

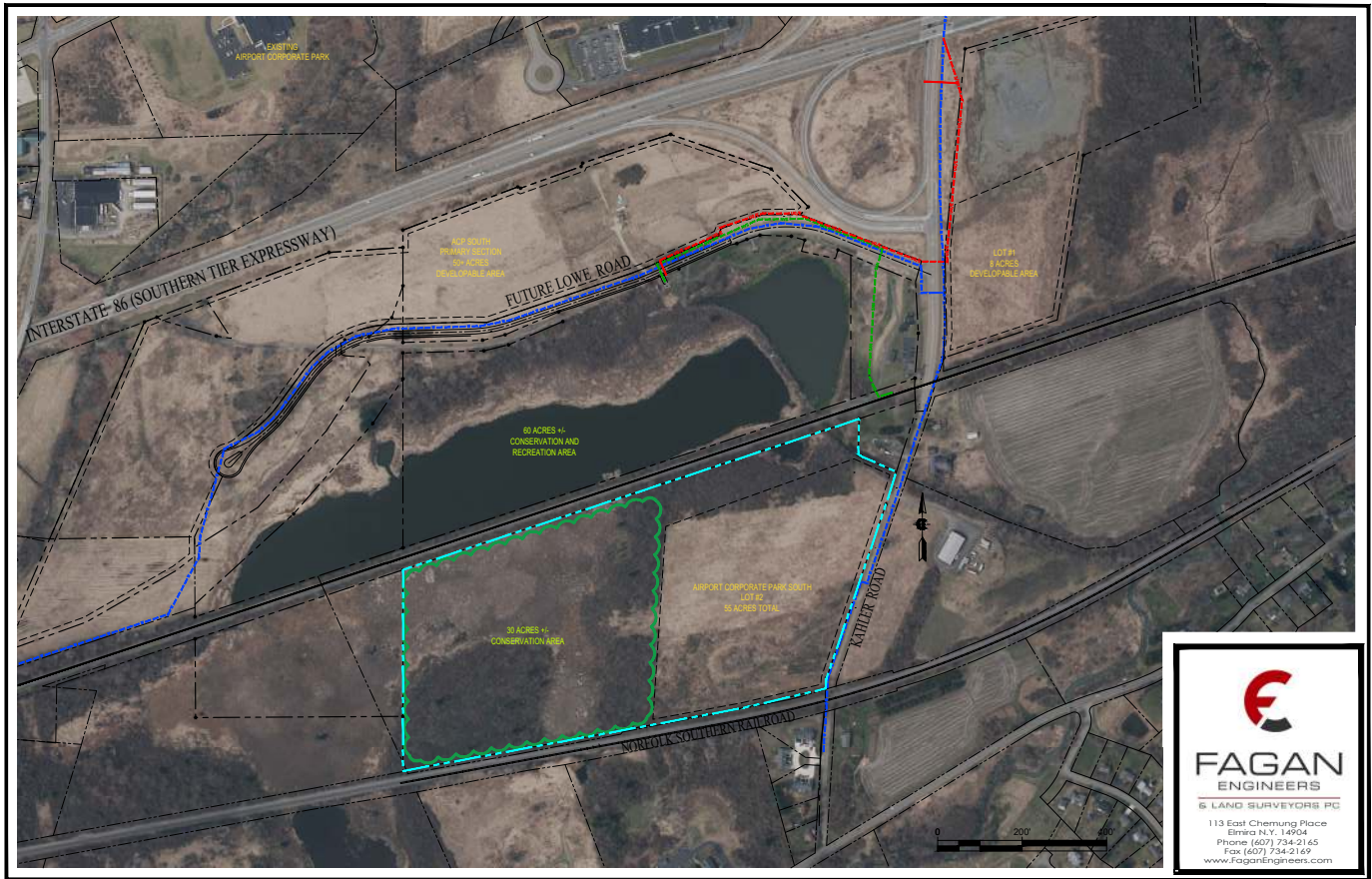
Big Flats, New York



SOUTHERN TIER ECONOMIC GROWTH (STEG)

Joseph Roman
P 607.733.6513
jroman.ida@chemungcountyny.gov





SITE SPECIFICATIONS

LOCATION	Big Flats, Chemung County, New York
DEVELOPER	Chemung County Industrial Development Agency
ZONING	Airport Business Development
CURRENT USE	Vacant - shovel ready parcels available 4-50 acres
ACCESS	Exit 50 off Interstate 86 / Elmira Corning Regional Airport
WATER	10" diameter main supplied by the Town of Big Flats
SEWER	8" diameter sewer line from Chemung County Sewer District with adequate capacity
ELECTRIC	NYSEG - 5,000 kilowatt service / 5 megawatt service
GAS	NYSEG - 80 MMBTU / Hr, 55 PSI
TELECOMMUNICATIONS	Open access to optical fiber broadband ring providing the highest speed connectivity available through the Southern Tier Network
NEIGHBORING BUSINESSES	Imaging and Sensing Technology Value Midstream (Williams), X-GEN Pharmaceuticals, Talisman Energy, Hunt Engineers, Corning Community College. Site is strategically located in close proximity to Corning and the Finger Lakes Region, both top tourism destinations in the State of New York
FINANCIAL INCENTIVES	Chemung County Industrial Development Agency, Empire State Development, others...
COMMERCIAL AIR SERVICES	1.6 miles from Elmira-Corning Regional Airport with direct connections to: Detroit - Delta Philadelphia - U.S. Airways Orlando / Tampa Bay - Allegiant
POPULATION	10 mile radius - 102,425 30 mile radius - 288,849 60 mile radius - 1,012,017